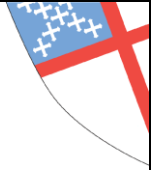




Joined by faith, living in the Spirit, serving in love



FYI

FYI St. David's by the Sea

9th Sunday after
Pentecost
July 26, 2015

601 4th Street, South, Charleston, SC 29405 phone: 312-735-5555
website: stdavidsbythesea.org
email: stdavidsbythesea@gmail.com

This week at St David's

Sunday, July 26

8:00a Holy Eucharist Rite 1
9:15a Adult Ed-
David and Bathsheba
10:15a Holy Eucharist Rite 2
11:30a Coffee Hour

Monday, July 27

10:00a Al-Anon

Tues, July 28

6:15p Boy Scouts

Wednesday, July 29

1:30p Bridge
5:00p Holy Eucharist -
6:00p BYOS supper
7:00p Bible study -

Sunday, August 2

8:00a Holy Eucharist Rite 1
9:15a Adult Ed-
David and Absalom
10:15a Holy Eucharist Rite 2
11:30a Coffee Hour
11:45 Daughters of the King

Dear People of God,

This past week I spent several days in Charlotte caring for two of our grandchildren while their parents were working. In my "off" time, I also did some minor construction work. The soffit, fascia and gutter by the porch had rotted because they were not properly installed when the house was built 40 years ago. Basic construction of a dwelling has abiding principles, building codes and rules. Wise builders know there is a right way to do things, and of course lots of wrong ways. Years ago there were several corners cut: not putting a drip edge on the roof, improperly installing the shingles and incorrectly hanging the gutters were just a few of its problems. These issues caused decay in the wood and long term maintenance problems!

Just as there are no shortcuts to quality construction, there are no shortcuts to a healthy spiritual life. I believe maturing as a Christian takes time, grace, experience, sacrifice, repentance, prayer, reconciliation, Scripture study, learning to be a good steward, and discipline, (and I am sure there are a few other things!) The Apostle Paul would add suffering, submission to those in authority over you, and both giving and experiencing grace. Jesus would add losing your life to find it, taking up your cross and following Him, and sacrificial love. Imagine trying to design a blueprint for spiritual growth without using any of these "building materials" for our spiritual life!

As the son of a carpenter, Jesus knew a great deal about orderly construction. May each of us take the time and energy to use sound construction standards, not only for our homes, but for our souls as well! Faithfully,

Fr. Scott +



Please join us for coffee hour in the meeting room following the worship

service. Coffee Hour Sign ups are needed for both services for August and September- The sign up sheet is on the back table- or call La Nora Holcombe 321-622-8426.

9:15 am Adult Sunday School is digging deep into the life of King David. This week we will look the story of King David and Bathsheba. Next week we will explore the story of David and Absalom. Join us and learn about the rest of his fascinating life!

Today we welcome back to the pulpit **the Rev. Jane Wesson**. Jane is the wife of Vestryperson Tony Wesson and an ordained Presbyterian Pastor. Welcome Jane as you share with us your insights into the Scriptures!



Keeping up with Construction

CONSTRUCTION UPDATE

WORK COMPLETED THIS WEEK

- Framing for sheetrock around AC vents in the Church completed
- Mechanical level over the narthex flooring installed and ductwork taken to area
- Hose Bibs installed on the new building



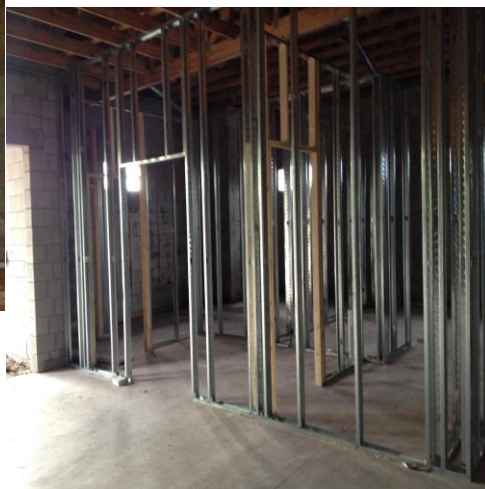
Transformer that will provide new electric service for the entire complex



The stained glass windows were painted/prepared for their final resting place!



- (above) Hardy cement board installed on much of the fascia of the Church

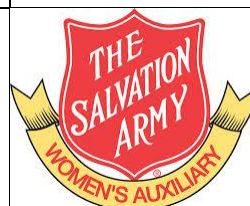


Metal framing for the bathrooms and much of the interior walls started

Long time member and friend of St. David's by the Sea, **Timmie Gunter**, died on July 18, in Dunwoody, Ga. Her children, **Bruce Gunter and Anne Bray** have decided that they will wait to have her memorial service when the Church construction is completed. She will be interred in the memorial garden next to her husband.

If you are a **bridge player** and would like to play, a small group of usually two tables gathers on Wednesdays at 1:30 for serious but fun bridge- and of course there are always cookies to keep up the spirits when the cards are poor! See Evelyn Kruger if interested!

Gloria Sproule is looking for persons interested in joining the Salvation Army Auxiliary. This group serves via the ministries of the Angel Tree, the Domestic Violence Program and similar ministries. This Auxiliary only meets four times per year.



Please speak with Gloria Sproule if you are interested in serving on this Board.

Dudley Lunch Schedule

Dudley's address is 34 West View Lane. His phone number is 321-544-1998. If you are unable to go on your assigned day, please swap with someone or call Ellie at 321-783-3992 or Jack at 321-482-6080

Monday, July 27 – Des and Ann Wassell
Tuesday, July 28 – Clive and Carol Gay
Thursday, July 30 – Lee and Don Englund
Friday, July 31 – Donn and Jeanne Weaver



We are honored and excited to celebrate Space Coast Seafarers Ministry's 2nd Annual Gala and invite you to be a special part of this grand evening. Thank you to all of our 2014 sponsors for making our first ever gala a huge success!

Once again, you can expect a wonderfully elegant venue with a delicious seated dinner, live music, and entertaining speaker, Dr. Dennis Swanberg.



Space Coast Seafarers Ministry

A cruise ship is a floating city that never sleeps, staffed by people from all around the world. The crew work on average 10-12 hours per day, 7 days a week. Contracts range from 6-9 months, taking crew members literally thousands of miles away from



home and loved ones. Being away from home and familiar cultural norms results in loneliness and stresses that many have never faced before.

The Space Coast Seafarers Ministry seeks to show the love of Christ by being a safe haven where crew members can reconnect with their loved ones and be encouraged spiritually. Over 29,000 visits are made to SCSM each year, where crew are provided with free WIFI, a hot meal, and free transportation to shopping areas.

St. David's by the Sea Outreach Committee has become a part of the support network for Family Promise- a ministry serving homeless families in Brevard County. This is an excerpt from the 2015 Report on Homelessness in Florida-. You may be surprised at some of the information found below.

Faces of Homelessness

There are many misperceptions and unhelpful stereotypes associated with homelessness. For instance, many people believe that people experiencing homelessness are mainly male with disabling conditions, substance abuse problems, and fundamentally are to blame for their homelessness. It is true that many suffer in a condition of chronic homelessness (long-term and repeated homelessness with a disabling condition), and they represent some of the most vulnerable among our communities' homeless populations. But these are not to blame for their homelessness; it is usually a result of their disabling condition. And this population accounts for only between 10 - 15% of homeless people around the state. In reality, homelessness touches men, women, children, families, and youth in our communities. The great majority of these people have faced trauma, crisis, and hardship that are outside of their control. They are in need of, and are actively seeking, care and services to assist them. It is important to consider these numbers in understanding who is touched directly by homelessness in our communities:

- Nationally and in Florida, over 30% of those experiencing homelessness are female;
- Roughly 1/3 of homeless people are in families with children;
- Nationally nearly one-third of all homeless people are children and youth; Florida school districts identified 71,446 children and youth who were homeless or unstably housed;
- In Florida schools and nationally, 11% and 8%, respectively of all homeless people are unaccompanied children and youth (one who is not in physical custody of a parent or guardian);
- Nationally, more than one in ten homeless adults across the nation was a Veteran (11% of 442,723 homeless adults).

On the Lighter Side

FAMILY CIRCUS By Bill Keane



6-9

©2006 Time Inc. Co.
Dist. by King Features Syndicate, Inc.
www.familycircus.com

“...and I never get a busy signal.”

REVERENDFUN.COM COPYRIGHT BIBLE GATEWAY



Thanks to Parr Winn

GOD GAVE YOU FREE WILL ... THE CITY DID NOT

03-14-2008

Bulletoon

by Trudy O. McConnell

Exodus 34:29-35
Psalm 119:105



"We finally found a useful way to handle Moses' 'shining face' situation..."

MARK YOUR CALENDARS

July 28- Family Promise Dinner at Riverside
 July 31- Family Promise Dinner at Riverside
 August 2nd - Daughters of the King 11:30a
 August 3- Men's Fellowship 8:00a Barrier Jacks on A1A
 August 10- Outreach Meeting 7:00p
 August 17- Vestry 5:00p
 August 21- Friday Friends Lunch noon



Jane Wesson made some Vegetable Bars that were a big hit at Coffee Hour last week- here is the recipe for those interested

- 2 (8 roll) cans Crescent Rolls
 - 8 oz. cream cheese, softened
 - 1 cup Miracle Whip or Mayonnaise
 - 1 pkg dry Hidden Valley Ranch Dressing
 - 1 head cauliflower
 - 1 bunch of broccoli
 - 1 carrot, grated
 - Mild Colby or Cheddar Cheese
1. Pat out rolls on large cookie sheet pan.
 2. Bake at 375 for 10 min. or until slightly brown.
 3. Mix cream cheese, Miracle Whip/Mayonnaise & dressing.
 4. Chop all vegetables. Save a few (at least a cup) to put on top.
 5. Mix vegetables with dressing mix & spread on cooled rolls.
 6. Sprinkle rolls with rest of vegetables and grated cheese.
 7. Refrigerate. Cut into squares or bars.

After hours, in emergencies, or to make an appointment with the Rector, call or email
 The Rev. Scott Holcombe cell (321) 525-2366 home (321) 622-8426 email revsth@gmail.com
 Or

The Rev. Carla Rhodes cell (321)794-3889

This information is also available on the website or by calling the church (24 hrs. answer) 321-783-2554.

Please call or email Des Wassell to volunteer in the Church office- Des' cell [703-989 4406](tel:703-989-4406)

Church WIFI - stdavidsbythesea

Password: BREWER 12